

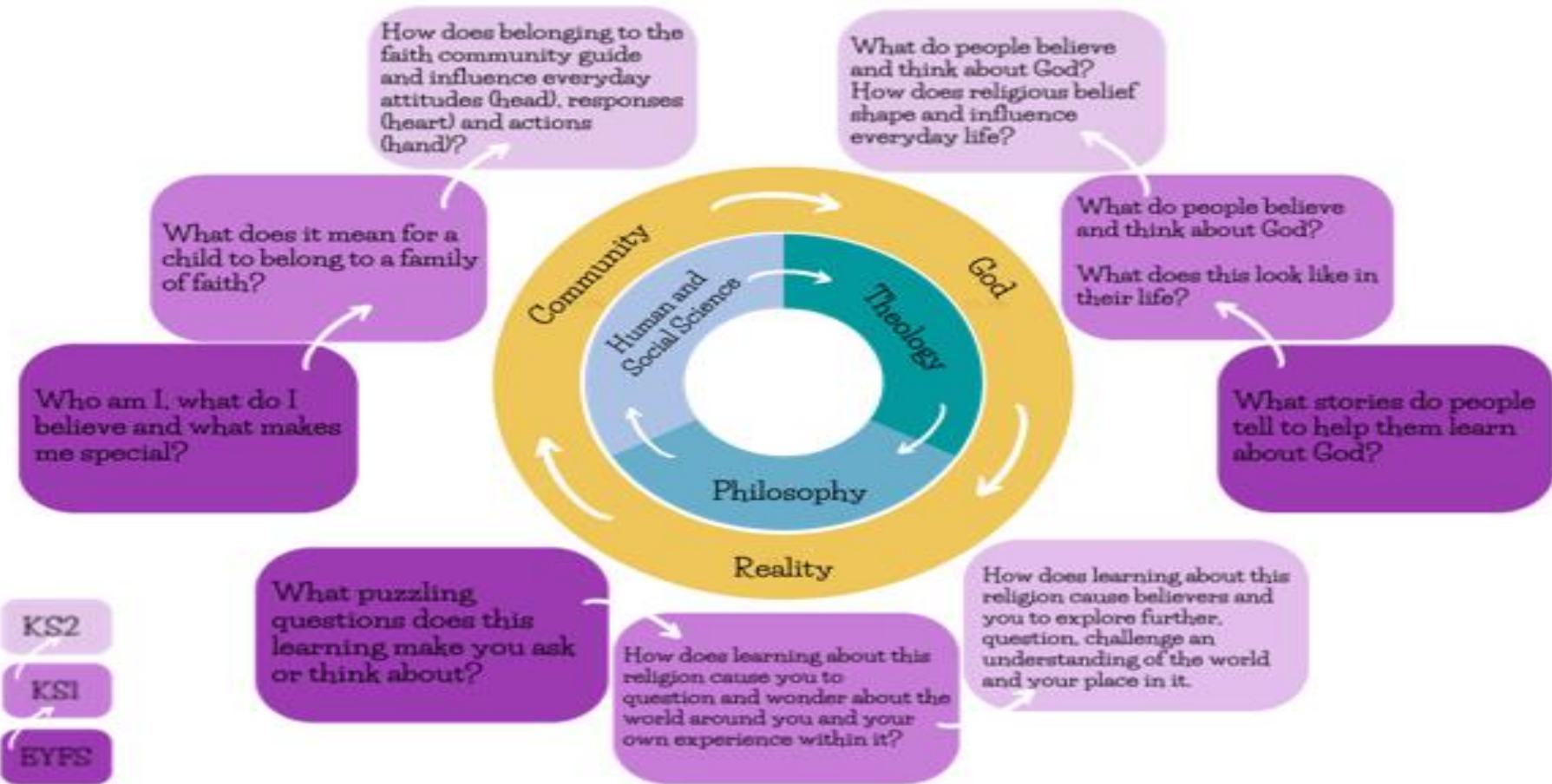


Religious Education

World Faiths Curriculum Map at Fawkham CEP School



	Term 1	Term 2	Term 3	Term 4	Term 5	Term 6
EYFS					Which stories are special and why? World faith stories (Meeting Children of faith) Judaism, Islam, Hindu Dharma, Sikhi	
KS1 cycle A					Judaism Who is Jewish and what do they believe?	
KS1 cycle B					Islam Who is Muslim and what do they believe?	
LKS2 cycle A		Sikhi – What is important for Sikh people?				Sikhi – How do Sikh people worship and celebrate?
LKS2 cycle B					Hindu Dharma – What does it mean to be a Hindu in Britain today?	Judaism, Hindu Dharma, Humanism, Christianity Journeys - Why do some people think that life is a journey? What significant experiences mark this?
UKS2 cycle A					Judaism, – What does it mean to be a Jewish person in Britain today?	Islam, Christianity Is it better to express your religion in arts and architecture or in charity and generosity?
UKS2 cycle B			Islam What do Muslim people believe about the way they should live their lives and why? Part 1		Islam What do Muslim people believe about the way they should live their lives and why? Part 2	



Other-

- World Faiths Day – House Teams Day (Sikhi, Judaism, Hindu Dharma, Islam)
- Worship – covering world faith festivals/important dates
- Golden threads concept
- Sticky knowledge lesson starters
- Annual trips/speakers linked to World Faiths